

# THE GRACEFUL



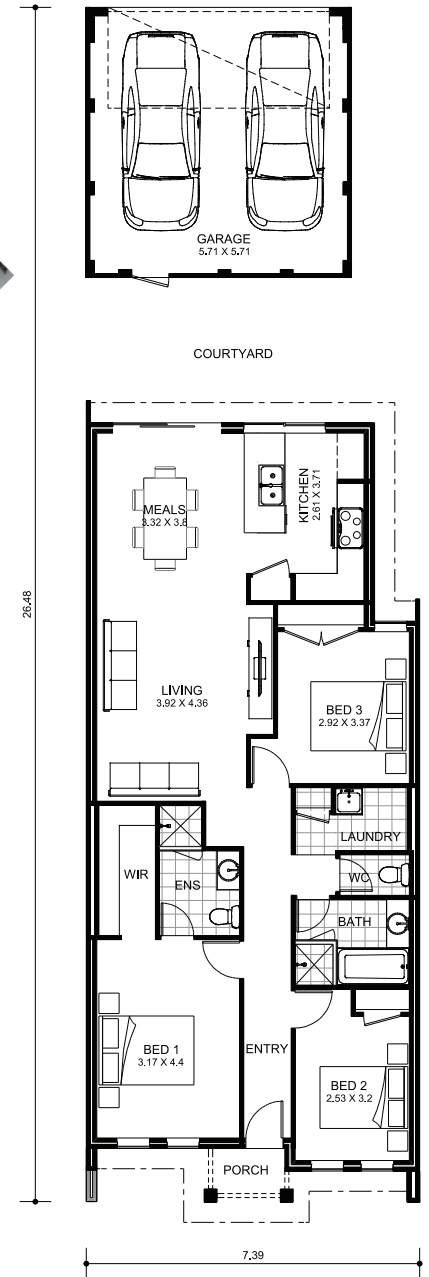
From **295k**

\*Price is subject to change at any time

Perfectly designed for narrow lots, The Graceful is an elegant coming together of well-thought-out planning and modern living. Without sacrificing on space or amenities, this plan offers families interested in minimising their property footprint without compromising on luxurious wants and needs.

## Specifications

- Min lot width 7.5M
- 3 bedrooms, 2 bathrooms, 2 car space garage
- Elegantly designed home for narrow lots
- The Graceful delivers modern luxury and spacious living in this well-designed plan.



**HOMES BY PCR**  
your build, your way

[www.homesbypcr.com.au](http://www.homesbypcr.com.au)